



# iBroker WEB

## User Guide

May 1, 2017

## Introduction

In addition to the smart phone apps, iBroker is accessible via the web. To access the web interface, go to My Account at <https://myaccount.gainfutures.com>. Once logged in, go to **iBroker WEB**. Then, click on **Login to iBroker WEB Demo** for simulated trading or **Login to iBroker WEB Live** for live trading.

**Please note:** iBroker assesses a per-side transaction fee of \$0.25 per contract on filled futures orders and \$0.10 per mini-lot on filled FX orders (\$0.10 per trade size of 10,000 units). Standard commission, exchange, and NFA fees apply.

## Navigation

The Account Summary window is shown when you first login. The profit/loss, cash, Net Liquidation Value, and required margin amounts will be displayed. On the right, Open Positions and Order Details will appear.

The screenshot shows the iBroker WEB interface. At the top, there is a navigation bar with 'FUTURES', 'OPTIONS', 'FOREX', 'WATCHLIST', and 'MY ACCOUNT' (highlighted). A search icon is on the right. Below the navigation bar, the 'Account Summary' section is on the left, displaying various financial metrics. The main area shows 'Account Number: DEMO057845' with a dropdown menu. Below this is a table of 'Open Positions' with columns for Contract, Position, Average Price, Last, P&L, and P&L USD. A callout box labeled 'Account Selection' points to the account number dropdown. Another callout box labeled 'Find Symbols' points to the search icon. At the bottom, four callout boxes point to specific elements: 'Account Summary' points to the summary table, 'Open Position Details' points to the table header, 'Reverse Position' points to a circular arrow icon, and 'Close Position' points to an 'X' icon.

Contract	Position	Average Price	Last	P&L	P&L USD
★ E-Mini S&P Jun17	+2	2373.625	2372.50	-1.12	-112.50 \$

### Find Symbols from the Quote window

First, review the expiration month in the top right. To mark the item as a **Favorite**, click on the **Star**. This will allow you to find the contract in the **Watchlist**.

FUTURES   OPTIONS   FOREX   WATCHLIST   MY ACCOUNT												
Watchlist   Currencies   Energies   Financials   Grains   Indices   Meats   Metals   Softs												
												First Expiry date ▾
CME E-Mini												
Contract ^	Last	Chg ↕	Chg % ↕		Bid	Ask		High	Low	Vol. ↕	Yesterday	Time
★ E-Mini Dow \$5 Jun17	20884	+21	+0.10%	[27]	20883	20884	[30]	20901	20824	63196	20863	12:39
☆ E-Mini Nasdaq Jun17	5418.00	+9.50	+0.18%	[20]	5417.75	5418.00	[17]	5428.00	5396.00	85506	5408.50	12:39
★ E-Mini S&P Jun17	2372.75	-2.50	-0.11%	[478]	2372.75	2373.00	[403]	2376.00	2368.75	517352	2375.25	12:39
☆ E-Mini S&P MidCap 400 Jun17	1723.3	-5.3	-0.31%	[5]	1723.2	1723.4	[4]	1730.4	1718.8	6921	1728.6	12:39

### Watchlist

All favorited items will appear in your Watchlist.

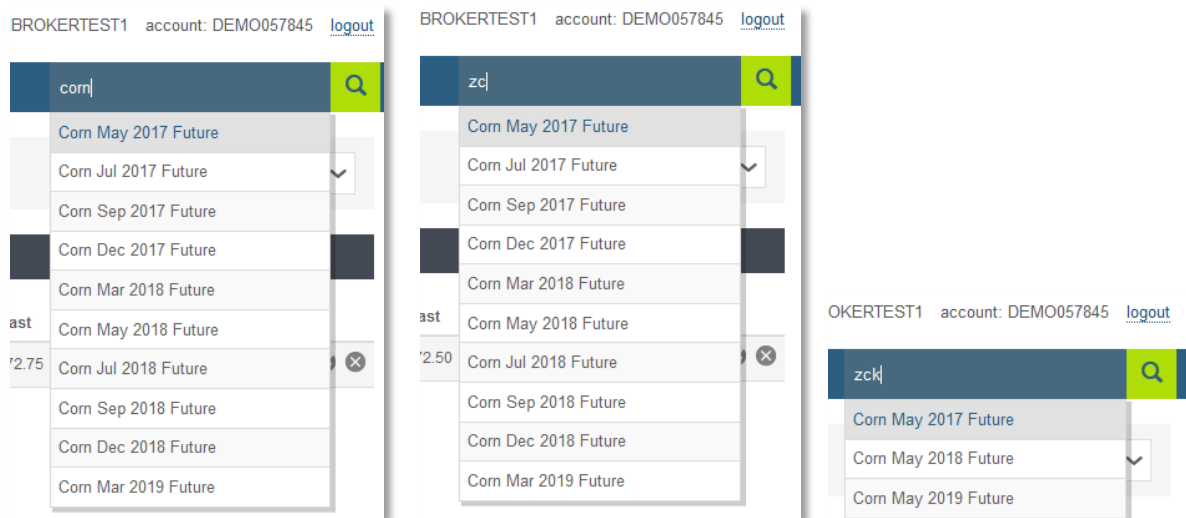
FUTURES   OPTIONS   FOREX   WATCHLIST   MY ACCOUNT												
Futures Watchlist												
Contract ^	Last	Chg ↕	Chg % ↕		Bid	Ask		High	Low	Vol. ↕	Yesterday	Time
★ 30 Year US T-Bonds Mar17	150*11	+0*19	+0.40%	[7]	150*08	150*11	[6]	150*11	149*18	39	149*24	12:00
★ Crude Oil miNY Apr17	48.450	-0.325	-0.67%	[8]	48.450	48.475	[4]	48.700	47.850	911	48.775	12:37
★ E-Mini Dow \$5 Jun17	20884	+21	+0.10%	[21]	20883	20884	[13]	20901	20824	63238	20863	12:40
★ E-Mini S&P Jun17	2373.00	-2.25	-0.09%	[611]	2372.75	2373.00	[72]	2376.00	2368.75	517761	2375.25	12:40
★ Euro FX Jun17	1.07920	+0.00015	+0.01%	[16]	1.07915	1.07920	[28]	1.08260	1.07855	107804	1.07905	12:40
★ Gold Mar17	1231.3	+1.5	+0.12%	[1]	1230.6	1231.1	[14]	1234.4	1229.3	22	1229.8	08:42

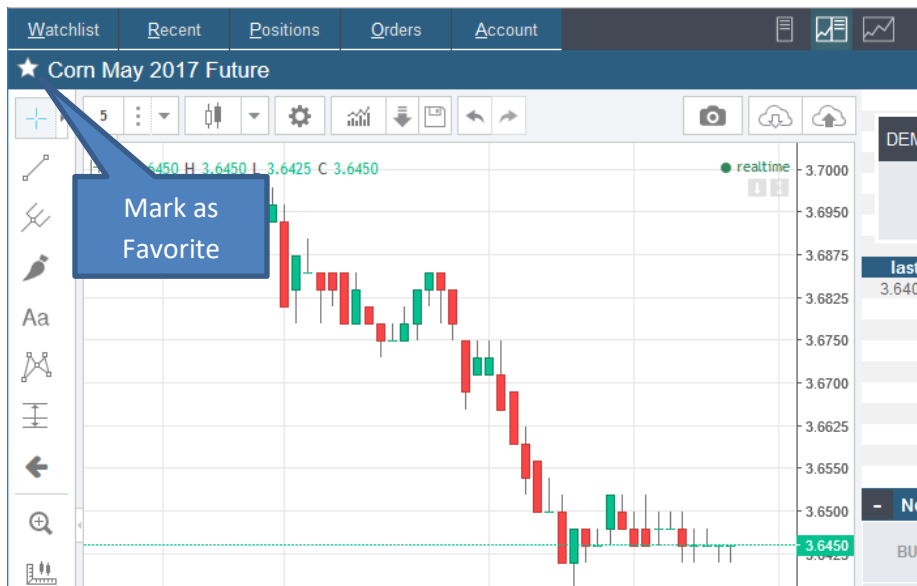
FX Watchlist												
Contract ^	Last	Chg ↕	Chg % ↕		Bid	Ask		High	Low	Yesterday	Time	
★ EUR/GBP	0.87021	+0.01168	+1.36%	-	0.86993	2.8	0.87021	-	0.87094	0.86579	0.85853	12:40
★ EUR/USD	1.07445	-0.03909	-3.51%	-	1.07422	2.3	1.07445	-	1.07787	1.07305	1.11354	12:40

### Locate Symbols by Search

Click on the magnifying glass and search either by keyword or symbol. The symbol can be entered partially with just the base symbol with or without a month code, or entered completely. For example, you can search with "Corn" "ZC" "ZCK".



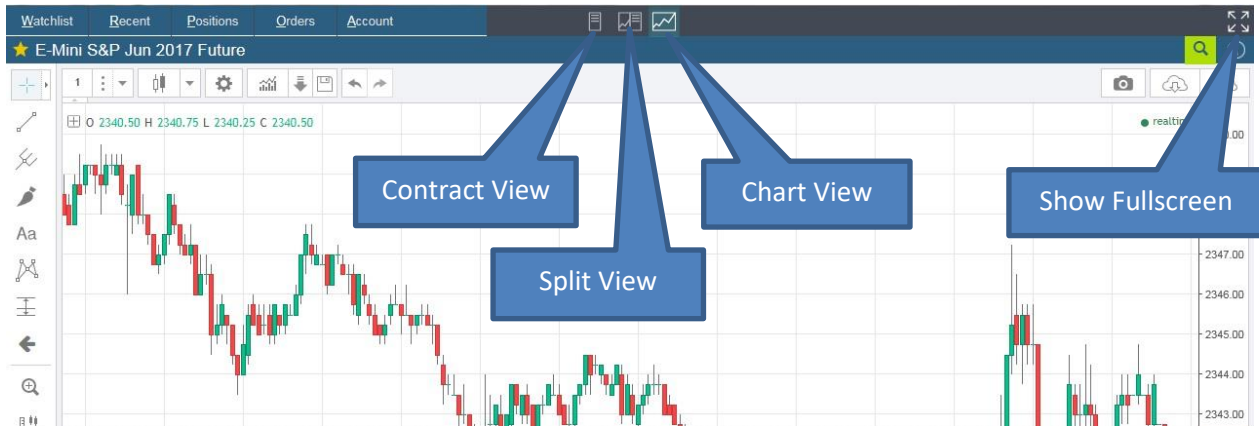
Once you select the contract, a pop up window will display. To mark the item as a **Favorite**, click on the **Star**. This will allow you to find the contract in the **Watchlist**.



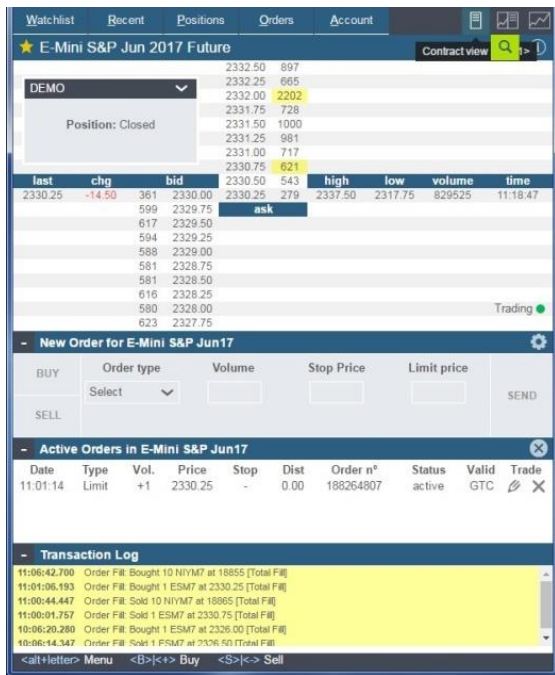
## Contract Page

### View Modes

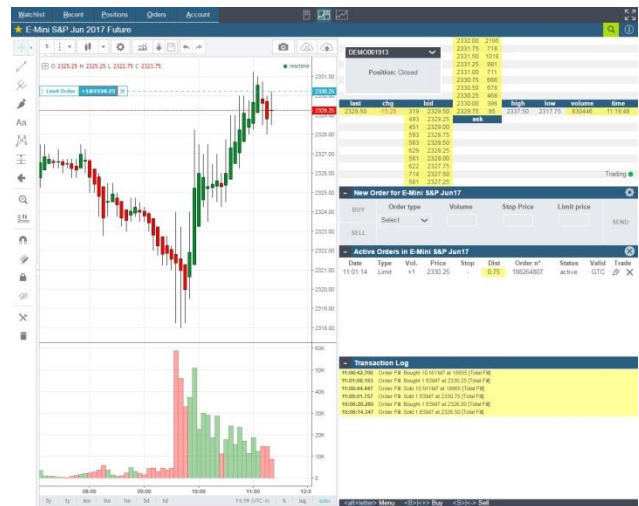
There are three view modes: Contract View / Split View / Chart View



(Chart View)



(Contract View)



(Split View)

## Chart View

### Menu bar

There are five menu items available. Left click on the menu item to see details. Keyboard shortcuts are available using ALT key plus the underlined letter.

<u>W</u> atchlist	<u>R</u> ecent	<u>P</u> ositions	<u>O</u> rders	<u>A</u> ccount
<alt+letter> Menu	<B> <+> Buy	<S> <-> Sell		

### Watchlist (alt-W)

Displays a list of contract(s) you have marked as **Favorites**. To remove an item, click on the X in the delete column.

Contract	Last	Chg	Delete
E-Mini Nasdaq Jun 2017 Future	5371.00	-7.75	X
E-Mini S&P Jun 2017 Future	2335.75	-9.00	X
E-Mini Dow \$5 Jun 2017 Future	20484	-91	X
EUR/USD	1.08756	-0.02598	X
USD/JPY	110.533	+8.614	X
USD/CAD	1.33779	+0.03868	X
GBP/USD	1.25792	-0.03722	X
EUR/GBP	0.86473	+0.00620	X

### Recent (alt-R)

Displays a list of recently viewed contracts.

Contract	Last	Chg
E-Mini S&P Jun 2017 Future	2330.25	-14.50
E-Mini Nasdaq Jun 2017 Future	5355.00	-23.75
E-Mini Dow \$5 Jun 2017 Future	20429	-146
Mini Corn May 2017 Future	3.57500	+0.01250
Corn May 2017 Future	3.5525	-0.0100
Soybeans May 2017 Future	9.7250	-0.0325
Mini Soybeans May 2017 Future	9.73000	-0.02750
AUD/CAD	1.01910	+0.01988
Silver Mar 2017 Future	17.575	+0.012

**Positions (alt-P)**

Displays all open positions. To close a position with a market order, click on the X icon.

Contract	Pos	Av Pr	P&L	Last	Close
E-Mini S&P Jun 2017 Future	-1	2330.75	+25.00 USD	2330.25	X
Nikkei 225 (Yen) Jun 2017 Future	-10	18865	0.00 JPY	18865	X

Close All

**Orders (alt-O)**

Displays all active/working orders. To cancel an order, click on the X icon.

Contract	Type	Vol.	Prec	Last	Dist	Canc.
E-Mini S&P Jun 2017 Future	L	+1	2330.25	2330.00	-0.25	X
Nikkei 225 (Yen) Jun 2017 Future	L	+10	18855	18870	-15	X

Cancel All

**Account (alt-A)**

Displays your account summary (Open P/L, Realized P/L, Total P/L, Cash, Net Liquidation, Initial Margin, Maintenance Risk, and Risk Value).

Account Status DEMO	
Open P/L	\$-224.80
Realized P/L	\$50.00
Total P/L	\$-174.80
Cash	\$1,544,814.72
Net Liq	\$1,544,589.92
Initial Margin	\$34.69
Maintenance Risk	\$3,507.00
Risk Value	\$1,928.00

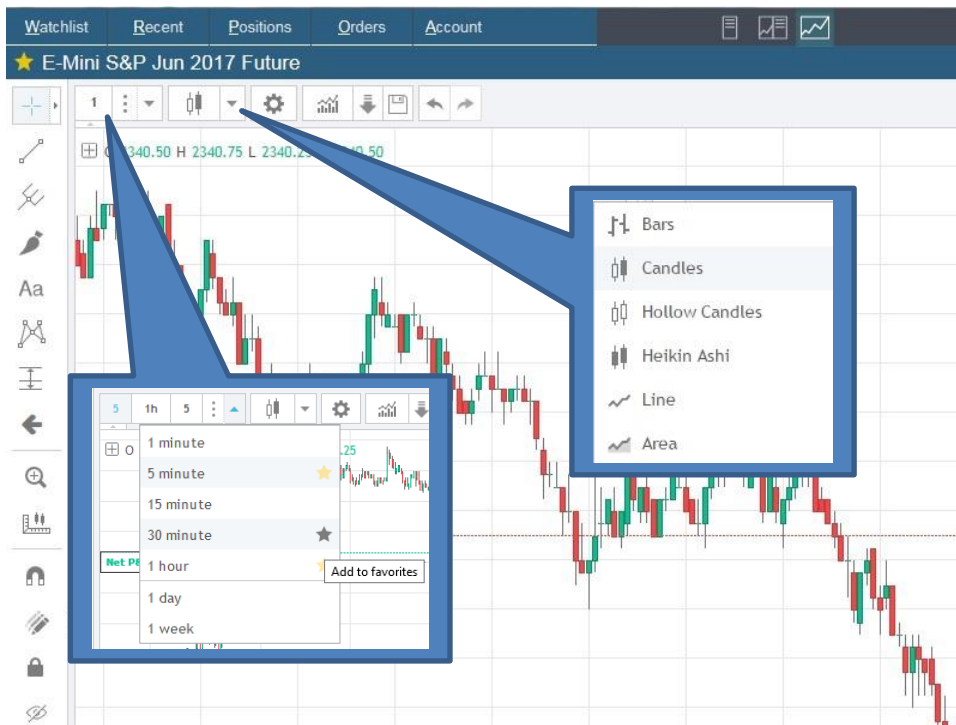
## Main Toolbar

### Intervals

Minutes (most popular intervals offered), 1 Hour, 1 Day or 1 Week. Click on the star icon to add as your favorite.

### Bar Styles

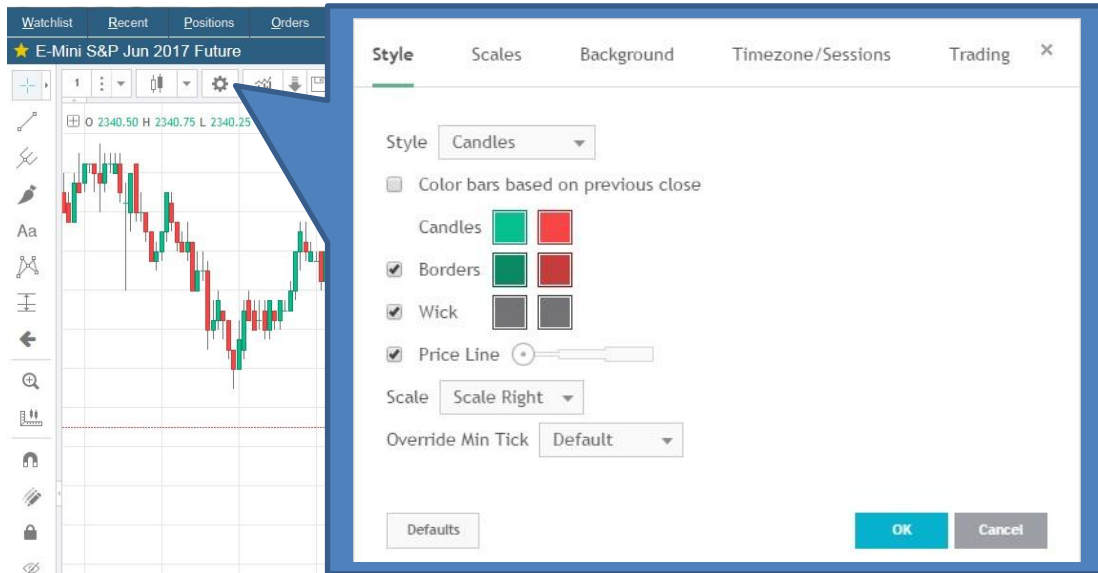
Available options are: Bars, Candles, hollow Candles, Heikin Ashi, Line, or Area. Click on the star icon to add as your favorite.





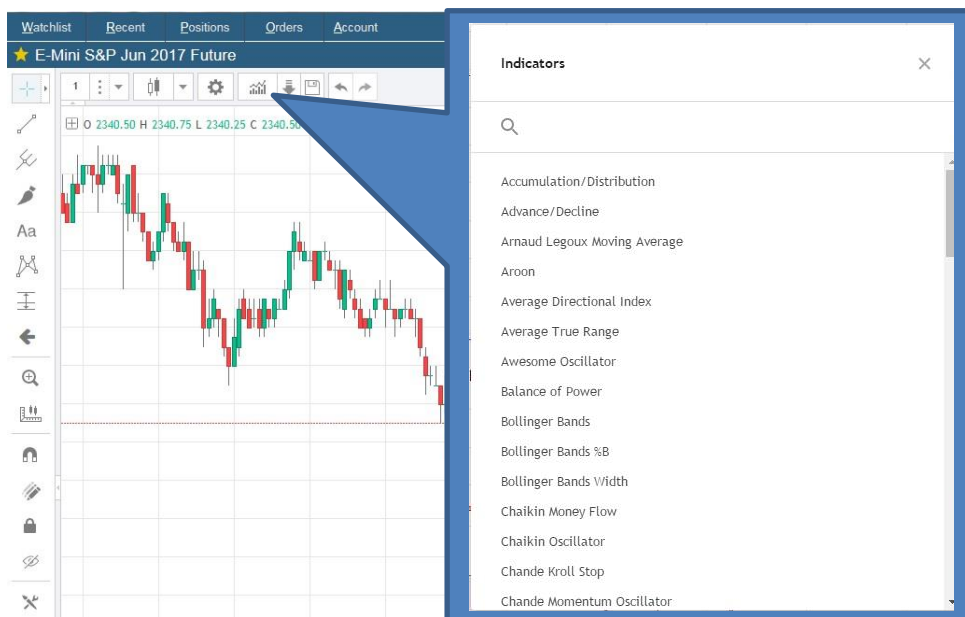
**Chart Properties**

There are five tabs inside the properties window: Style, Scales, Background, Timezone/Sessions, and Trading. Click on the tab to review the options. Once all changes have been made, click OK. If you need to revert back to default settings, click on Defaults.



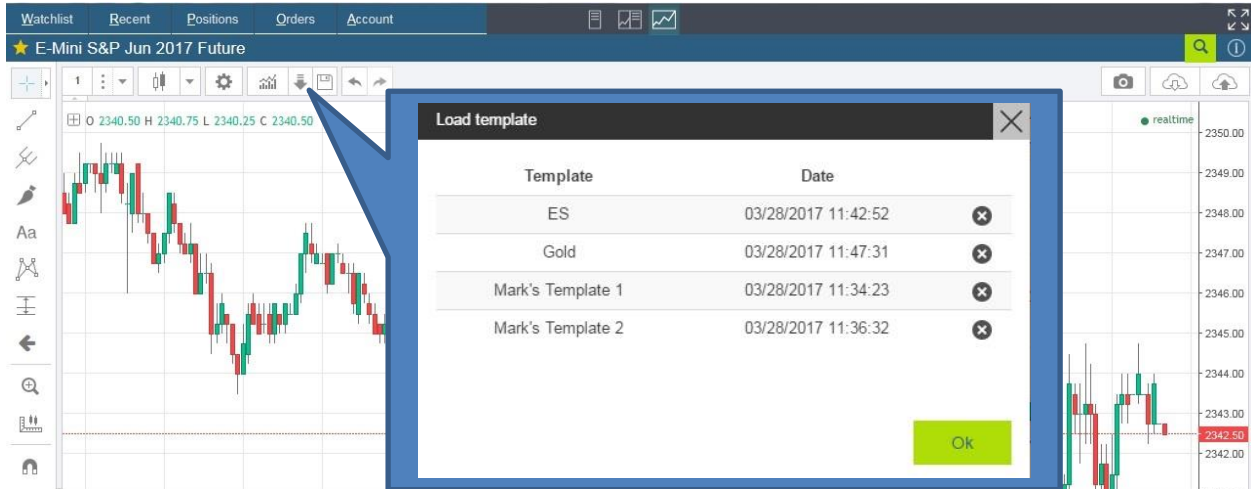
**Indicators**

There are over 70 indicators to choose from. Locate an indicator by using the scroll bar on the right to or search by keyword to the right of the magnifying glass. Left click on the indicator name and it will appear. Once finished adding indicators, click on the X.



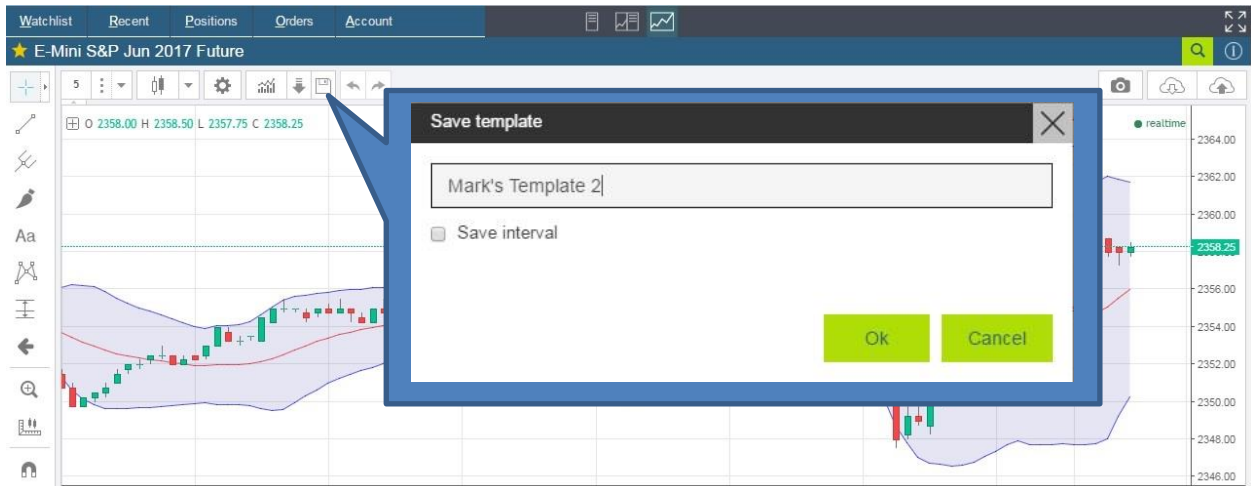
**Load Template**

If you have any saved chart templates, you will see them here. Click on the template you wish to load.



**Save Template**

If you wish to save the work made in your chart, click on the SAVE icon and type in a template name.



**Right Click Menu**

Trading from the Chart

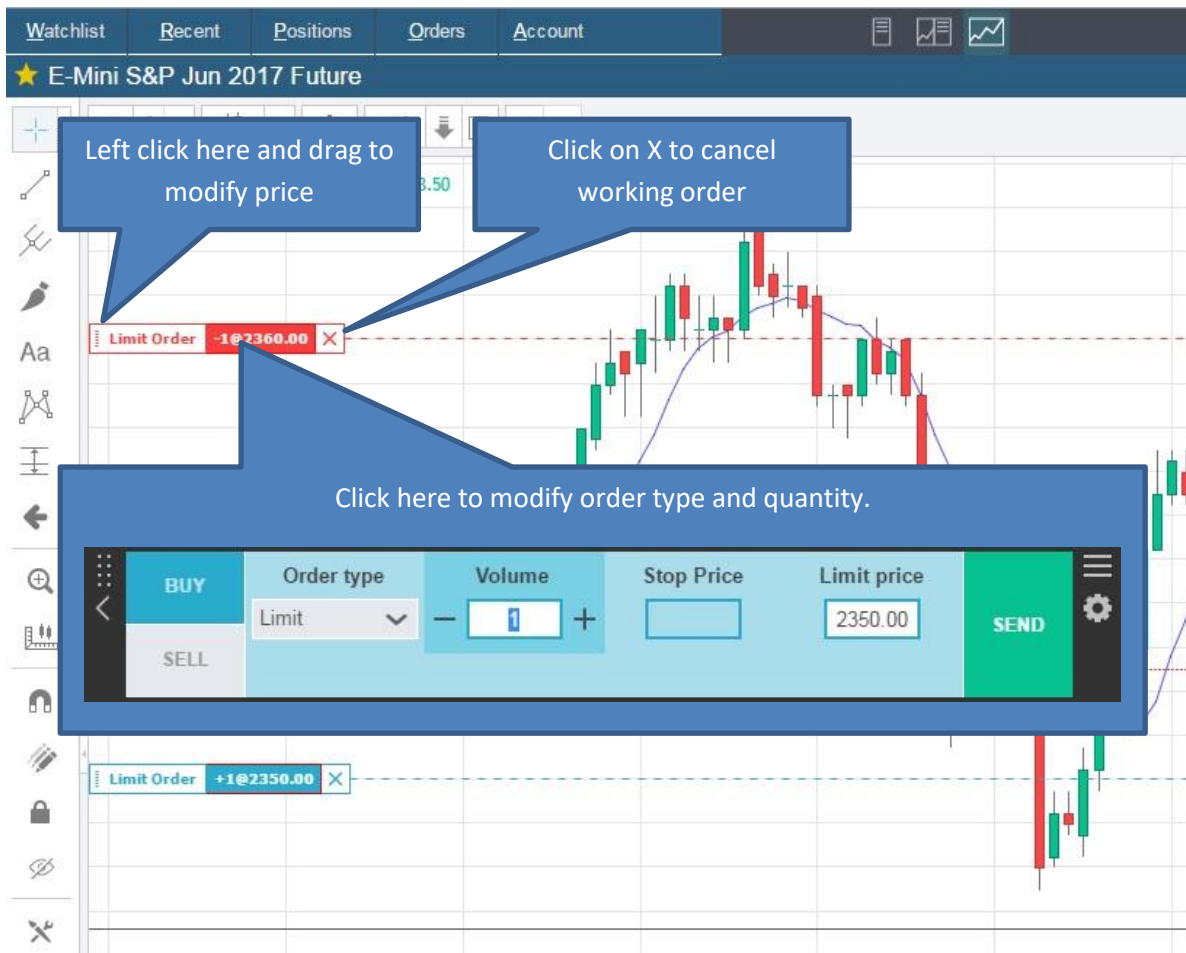
Right click on the chart at the price you want place your order. Then, select the buy or sell order options.



**Order Management**

**Working Orders**

Working BUY orders will appear in BLUE. Working SELL orders will appear in RED. Orders can be modified in the left most region of the trade line by left clicking and dragging to a new price. Move your mouse cursor up or down to adjust the order price. To modify via the order entry window, simply left click on the red or blue region of the trade line. To cancel an order, click on the X icon.

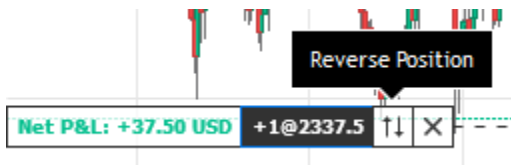


**Open Positions**

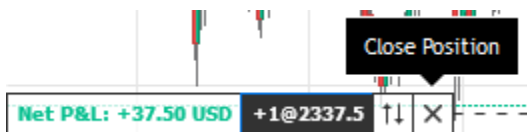
The Net Profit/Loss will appear in the contract's currency. Long positions will report as a positive number and short positions will appear as a negative number. The average position price will appear after the @ symbol.



To reverse the position, click on the double arrow icon.



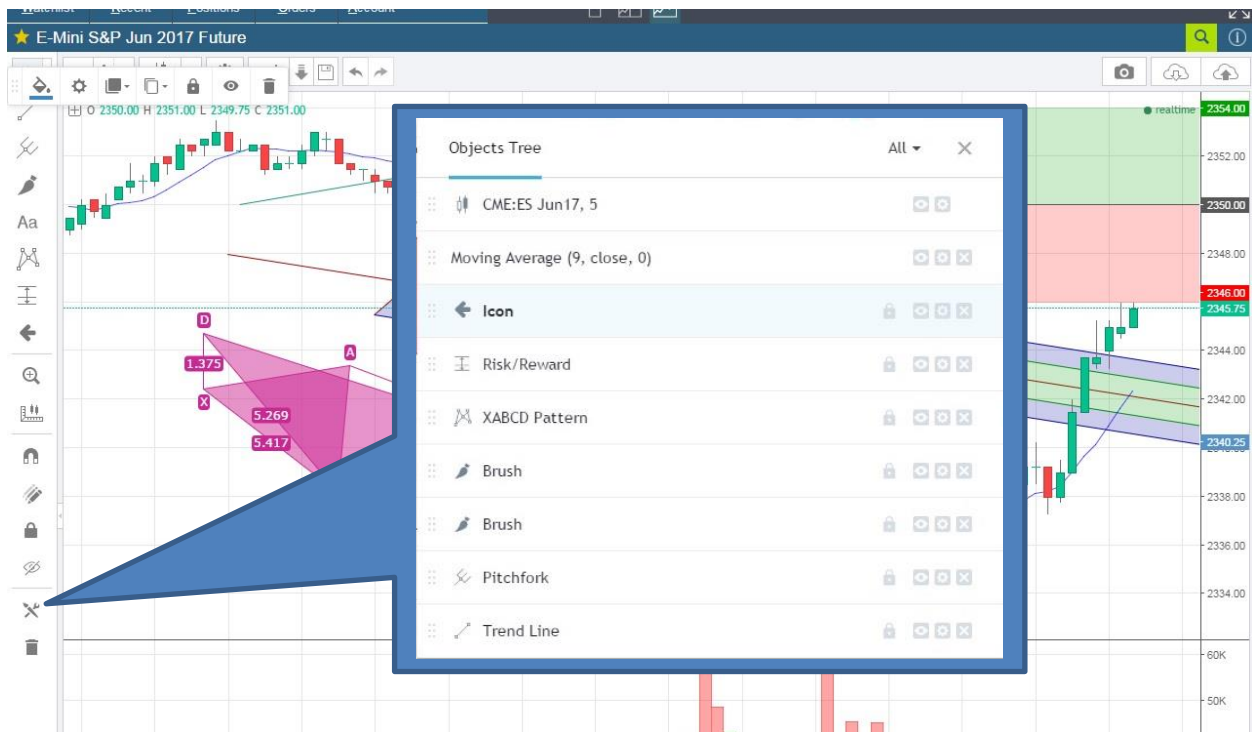
To exit the position, click on the 0058 icon.



### Drawing Objects Toolbar

Drawing objects appear on the toolbar on the left side of the chart. Left click on the item to draw the object.

- To **review** the list of objects, right click and go to Object Tree.
- To **remove** an object, click on the X.
- To **hide** the item, click on the eye icon.
- To **edit** properties of the item, click on the gear icon.



### Contract View

The right side of the interface contains a Depth of Market (DOM), Order Entry, Active Orders, and Transaction Log. Clicking on the DOM at a price will populate the Order Entry with the price you click on. To execute the order, check all order details and click **Send**.

**Position Details**  
 DEMO057845  
 Position: Closed

**Full Screen**

**Search New Contract**

2337.25	588						
2337.00	872						
2336.75	741						
2336.50	785						
2336.25	853						
2336.00	809						
2335.75	919						
2335.50	724						
2335.25	753						
2335.00	506						

last	chg	bid	ask	high	low	volume	time
2335.00	-9.75	168	2334.75	2340.50	2317.75	1287348	14:46:28
		417	2334.50				
		632	2334.25				
		679	2334.00				
		748	2333.75				
		827	2333.50				
		725	2333.25				
		710	2333.00				
		739	2332.75				
		806	2332.50				

**DOM Ask column - click on price to send SELL order**

**DOM Bid column - click on price to send BUY order**

**New Order for E-Mini S&P Jun17**

BUY	Order type	Volume	Stop Price	Limit price	SEND
SELL	Select				

**Active Orders in E-Mini S&P Jun17**

D	Type	Vol.	Price	Stop	Dist	Order n°	Status	Valid	Trade
The selected account has no active orders for this contract									

**Collapse (or Expand) Window Frame**

**Transaction Log**

11:45:10.873	Order Fill: Sold 2 ESM7 at 2334.50 [Total Fill]
11:45:08.463	New Order: Sell 2 ESM7 @ Market [Confirmed]
11:45:08.127	New Order: Sell 2 ESM7 @ Market [Received]
11:34:54.467	Order Cancel: Buy Limit 1 ESM7 @ 2332.75 [Confirmed]
11:34:54.233	Order Cancel: Buy Limit 1 ESM7 @ 2332.75 [In Progress]
11:34:54.213	Order Cancel: Buy Limit ESM7 [Received]
11:34:51.437	New Order: Buy Limit 1 ESM7 @ 2332.75 [Confirmed]
11:34:51.190	New Order: Buy Limit 1 ESM7 @ 2332.75 [Received]

**Position Details**

Position details are provided below your account number. If there is no open position for the selected contract, it will state **Closed**.

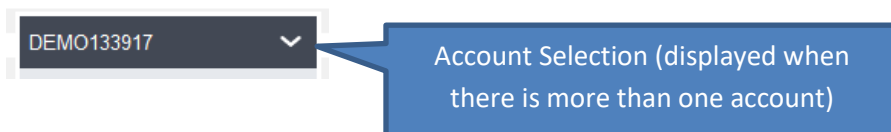


When in an open position, the number of contracts and average position price will appear. The profit/loss will display in number of points and currency amount. There are two position management icons: 1) Reverse Position (exit and enter the opposite direction) and 2) Close Position.



**Account Selection (if applicable)**

If you have multiple accounts, there will be a white arrow next to your account number in the positions window where you can change the account you are viewing and trading.



**Contract Specifications**

To review contract specifications, click on the 'i' icon.

Contract Info	
Name	E-Mini S&P Jun17
Symbol	ES +
Expiration Date	06/16/2017
Point Value	50 USD
Min Tick	0.25 points
Initial Margin	5500 USD
Maintenance Margin	5000 USD
Exchange	CME
Months traded	03-06-09-12
Trading Hours	18:00 - 17:00



**Order Entry**

**Buy/Sell**

When using the order entry, you can click the price in the bid or ask column of the DOM, or click 'Buy' or 'Sell'. Keyboard shortcuts will appear below.

- New Order for E-Mini S&P Jun17					
BUY	Order type	Volume	Stop Price	Limit price	SEND
SELL	Limit	1		2351.50	
				GTC	
<enter> Send   <tab> Next   <enter> Send					

**Order Type**

Available options are: Market, Limit, Stop, and Stop Limit.

- New Order for E-Mini S&P Jun17					
BUY	Order type	Volume	Stop Price	Limit price	SEND
SELL	Limit	1		2351.50	
				GTC	
<tab> Next   <enter> Send					

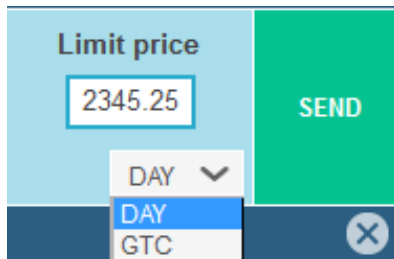
**Volume and Order Price**

You can change quantity/volume or price using the plus or minus keys, or type in the value.

- New Order for E-Mini S&P Jun17					
BUY	Order type	Volume	Stop Price	Limit price	SEND
SELL	Market	1			

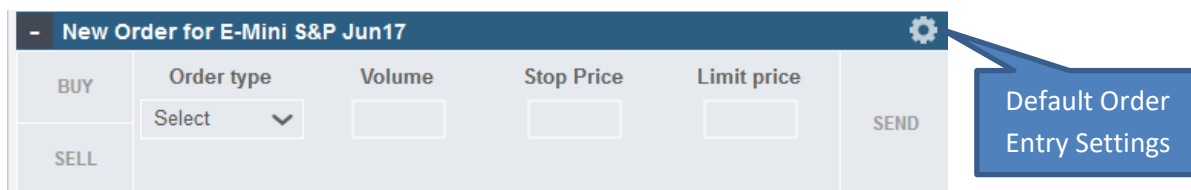
**Flag/order expiry**

A flag drop down will appear for limit or stop orders. **DAY** orders will expire if they are not filled by the close of the session. **GTC** (Good til Canceled) will remain working past the day close and into the next session(s) until filled or canceled.

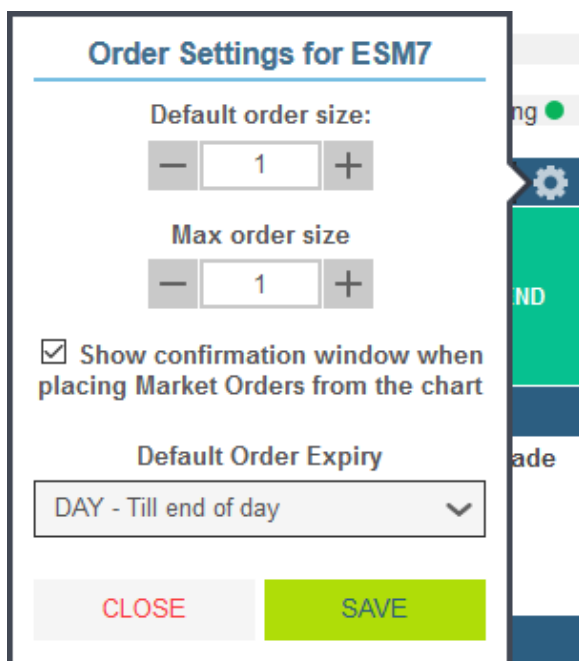


**Order Settings**

Click the gear icon to configure order settings.



Possible order settings are: default order size, max order size, confirmation window, and order expiry/flag.



**Active Orders**

Working order details will appear below. To modify an order, click on the pencil icon. To cancel the order, click on the X icon.

- Active Orders in E-Mini S&P Jun17 <span style="float:right">✕</span>									
Date	Type	Vol.	Price	Stop	Dist	Order n°	Status	Valid	Trade
16:27:52	Limit	+1	2327.75	-	10.50	189280386	active	DAY	

Click on the X icon in the window header to cancel all orders for the selected contract.

- Active Orders in E-Mini S&P Jun17 <span style="float:right">✕</span>									
Date	Type	Vol.	Price	Stop	Dist	Order n°	Status	Valid	Trade
16:59:38	Limit	+1	2335.75	-	2.50	189280682	active	DAY	
16:59:31	Limit	+1	2336.50	-	1.75	189280681	active	DAY	
16:59:26	Limit	+4	2335.25	-	3.00	189280678	active	DAY	

Cancel all orders (ctrl+supr)

**Transaction Log**

A complete log of order events will appear in the transaction log.

- Transaction Log	
16:27:52.777	Order Replace: Buy Limit 1 ESM7 @ 2327.75 [Confirmed]
16:27:52.403	Order Replace: Buy Limit 1 ESM7 @ 2324.75 [In Progress]
16:27:52.357	Order Replace: Buy Limit 1 ESM7 @ 2327.75 [Received]
16:27:42.310	Order Replace: Buy Limit 1 ESM7 @ 2324.75 [Confirmed]
16:27:41.920	Order Replace: Buy Limit 1 ESM7 @ 2323.50 [In Progress]
16:27:41.907	Order Replace: Buy Limit 1 ESM7 @ 2324.75 [Received]
16:27:37.960	New Order: Buy Limit 1 ESM7 @ 2323.50 [Confirmed]
16:27:37.687	New Order: Buy Limit 1 ESM7 @ 2323.50 [Received]
16:12:34.593	Order Fill: Bought 1 ESM7 at 2337.50 [Total Fill]
16:12:34.473	New Order: Buy 1 ESM7 @ Market [Confirmed]
16:12:34.103	New Order: Buy 1 ESM7 @ Market [Received]